

Donald K. Dunn, son of Opie Alvin (1903-1954) and Lettie Pauline "Peg" (Chambers) Dunn, was born 21 February 1929, Mount Vernon, Knox County, Ohio. Opie and Peg divorced in 1942 with Lettie charging cruelty and being granted alimony. The children went with Peg who moved the family, around 1945, to the Okemos, Ingham County, Michigan area. Donald graduated from Okemos High School in 1946.

On 22 December 1950 Donald married Phyllis M. Johnson, born 24 December 1930.

Judson Memorial Baptist church was the scene of the Saturday afternoon wedding of Miss Phyllis M. Johnson, daughter of Mrs. Clella Johnson, 644 Irvington ave., and Donald K. Dunn. Rev. Gilbert Miles officiated.

Mr. Dunn is the son of Mrs. Pauline Brayles of Detroit.

The bride wore a wine suit with gray accessories. She carried a colonial bouquet of yellow and white pompons.

Miss Marilyn Johnson, maid of honor, chose a dark gray suit with black accessories and carried a bouquet of red roses.

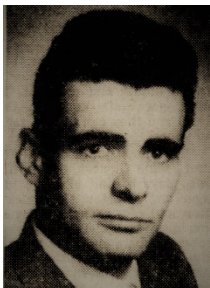
Max Kranz of Detroit was groomsman.

Organ wedding music was played by Mrs. Donald Etter.

A reception for 75 guests was held in the church parlors.

The couple will be at home after Jan. 1 when they return from a honeymoon to West Virginia.

Lansing State Journal,
June 15, 1960



Donald served in the Michigan National Guard. He also

was employed by the State of Michigan and rose to be Director of the Market Standards Division, Insurance Bureau. He and Phyllis celebrated 33 years and 2 children together. Donald died 18 June 1984. Phyllis did not remarry. She lost her son Donald Sherman, born 1958, in

2004. Phyllis died 6 April 2017. Donald and Phyllis were interred Deepdale Memorial Park, Eaton County, Michigan.

Lansing State Journal (Lansing, Michigan) Tuesday 19 June 1984

DONALD K. DUNN

6121 LERNER WAY

Age 55, passed away June 18, 1964. Born in Mr. Vernon, Ohio and has lived in the Lansing area for most of his life. Employed with the State of Michigan as Director of Market Standards Division, Insurance Bureau. Surviving are wife, Phyllis M.; son and his wife, Donald S. and Paula Dunn stationed in Germany; daughter and her husband, Diane and Douglas Simons of Lansing; mother, Mrs. Pauline Lavery of Howell; 4 grandchildren, Darrel and Dori Simons, Donald F. (Frankie) and Morene Dunn; sister, Mrs. Max (Dolores) Kranz of Howell; step-sister, Mrs. John (Lillie) Wate of Milford. Religious services will be conducted by Rev. Thomas G. Bayes, Jr., Pastor of the Judson Memorial Baptist Church at 1 p.m. Thurs. in the Estes-Leadley Greater Lansing Chapel with interment in Deepdale Memorial Park.

*Lansing State Journal,
June 20, 1984*

DUNN, DONALD K.

6121 Lerner Way

Religious services will be conducted at 1 p.m. Thurs. in the Estes-Leadley Greater Lansing Chapel with interment in Deepdale Memorial Park. Pallbearers will be Guy Dorer, Royce Dorer, Ben Dorer, Mike Kranz, Steve Kranz, Russ Colbry. Honorary pallbearers will be Larry Miller and Randy Colbry. Memorial contributions may be made to E.W. Sparrow Hospital, Pediatrics Unit or St. Vincent's Home for Children.